

---

# MANSON INSULATION

---

**KEEPING IT SIMPLE.™**

2016 LOAD DATA GUIDE  
Effective January 4<sup>th</sup> 2016

USA





## **KEEPING IT SIMPLE.**

We are pleased to provide you with your new Load Data Guide for Manson Insulation. This has been designed to be simple, concise and highly useful in your business efforts. Your Manson Insulation Area Manager is available to answer any questions you might have.

# TABLE OF CONTENTS

ALLEY-K™ PIPE INSULATION . . . . .	3-11
AK-CLAD™ . . . . .	12-14
AK BOARD™ INSULATION . . . . .	15-16
AK FLEX™ PIPE AND TANK INSULATION . . . . .	17
HIGH TEMPERATURE INSULATION . . . . .	18
ALLEY WRAP B™ INSULATION . . . . .	19
AKOUSTI-LINER™ . . . . .	20-21
AKOUSTI-LINER R™ . . . . .	22
ALLEY KAT AIR DUCT BOARD™ . . . . .	23
AK BLANKET™ . . . . .	24



# PRODUCT LINE

By choosing Manson, you are choosing higher quality glass mineral wool products; products whose thermal and acoustical properties have been renowned and appreciated for many decades. Offered in a variety of sizes and formats, our products are composed of inorganic glass fibers bonded

by a thermosetting resin and can be used for a multitude of applications, both industrial as well as commercial. From pipe insulation, heating and air ducts, to panels and blanket used in the installation of air handling and extending over to OEM products, Manson will expertly meet all of your insulation needs.

## PRODUCTS

### Pipe & Equipment

Alley-K™ ASJ  
Alley-K™ Plain  
AK-Clad™  
AK Board™  
AK Flex™  
High Temperature Products

### HVAC

Akousti-Liner™  
Akousti-Liner R™  
Alley Wrap B™  
AK Board B™  
Alley Kat Air Duct Board™

### OEM PRODUCTS

AK Blanket™

## Product Classifications

### STANDARD PRODUCTS

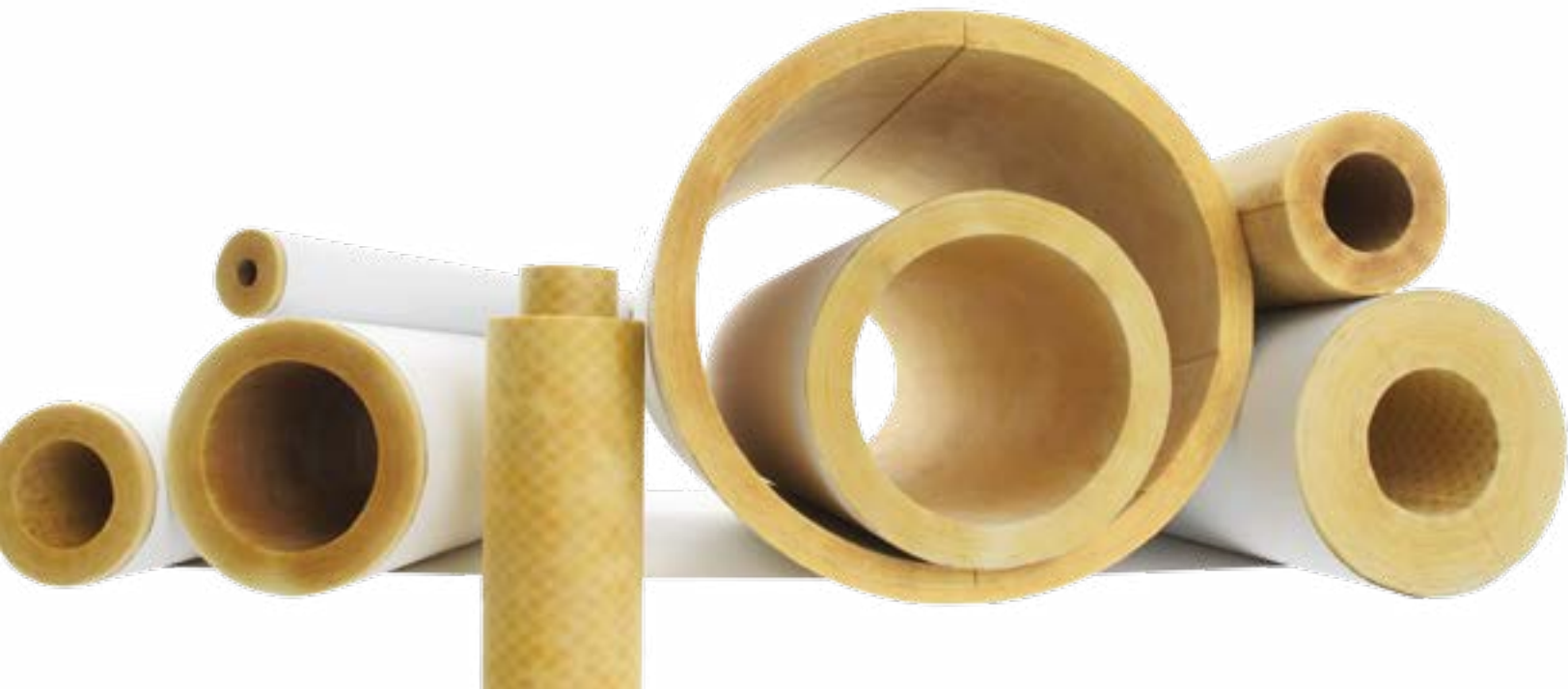
Standard products will typically be in stock at all times. Orders for standard products received by 1:00 pm EST (Monday-Friday) will typically ship the following day. This may vary based on order volumes or availability of shipping slots and transportation capacity.

### NON-STANDARD PRODUCTS

Non-standard products are generally available from stock, but may require a lead time. Lead times for non-standard products are noted by each product line in the load data guide. A minimum run quantity may apply as noted on an individual product line price page.

### CUSTOM PRODUCTS

Items not listed in this book are deemed to be custom products. Please contact your Manson Insulation Area Manager to inquire about ordering custom products. All custom product requests require approval, regardless of whether the product has previously been produced. Custom product lead times will vary, depending on whether the item has previously been produced and the timing of the order. Special pricing and minimum order quantities will apply. Lead time for each product begins after approval. A minimum run quantity will apply as noted on an individual product line price page.



## ALLEY-K™ PIPE INSULATION

**ALLEY-K™** pipe insulation is a preformed insulation product composed of high quality glass fibers, bonded together with a thermosetting resin. The 36" pipe sections are available with or without the all service jacket (ASJ). Our all service vapour retarder jacket (ASJ), reinforced with glass fibers, comes with a factory applied pressure sensitive self-sealing lap closure system (SSL). Butt strips are also supplied.

**ALLEY-K™** pipe insulation is intended as a thermal insulation for hot and cold service piping. Typical uses include domestic hot and cold water, hot water heating, high temperature, dual temperature, steam, condensate and refrigerated lines. As a component of a suitable insulation system, plain ALLEY-K™ pipe insulation may be used for light industrial applications, while ALLEY-K™ pipe insulation with ASJ jacket may be used for commercial and institutional usage. This product does not contain polybrominated diphenyl ethers (PBDE) such as Penta-BDE, Octa-BDE or Deca-BDE.



## ALLEY-K™ 850°F ASJ PIPE INSULATION (5/8" to 5 1/8" ID)

		CTS	IPS		1/2" Wall	1" Wall	1 1/2" Wall	2" Wall	2 1/2" Wall	3" Wall	3 1/2" Wall	4" Wall	
ASJ	CARTON	5/8"		Code	5002095	5001808	5001799	5002096					
				Feet / Carton	330	126	81	99					
				Minimum order	1 carton	1 carton	1 carton	10 cartons					
				Truckload %	0.242	0.242	0.242	0.412					
		7/8"	1/2"	Code	5002094	5001806	5001793	5001807					
				Feet / Carton	255	126	60	75					
				Minimum order	1 carton	1 carton	1 carton	1 carton					
				Truckload %	0.242	0.242	0.242	0.412					
		1 1/8"	3/4"	Code	5001809	5001810	5001801	5001811	5002105	462675			
				Feet / Carton	204	126	60	75	42	33			
				Minimum order	1 carton	1 carton	1 carton	1 carton	10 cartons	10 cartons			
				Truckload %	0.242	0.242	0.242	0.412	0.412	0.410			
		1 3/8"	1"	Code	5001812	5001813	5001802	5001814	5002092	5003498			462695
				Feet / Carton	168	135	75	60	42	33			18
				Minimum order	1 carton	1 carton	1 carton	1 carton	10 cartons	10 cartons			10 cartons
				Truckload %	0.242	0.329	0.329	0.412	0.412	0.410			-
		1 5/8"	1 1/4"	Code	5001818	5001820	5001803	5001821	5001822	5003497			462693
				Feet / Carton	126	135	60	60	42	33			18
				Minimum order	1 carton	1 carton	1 carton	1 carton	1 carton	10 cartons			10 cartons
				Truckload %	0.242	0.329	0.329	0.412	0.412	0.410			0.410
		1 1/2"		Code	5001826	5001827	5001804	5002069	5002067	5001829			
				Feet / Carton	117	99	60	42	33	24			
				Minimum order	1 carton	1 carton	1 carton	1 carton	1 carton	10 cartons			
				Truckload %	0.242	0.329	0.329	0.412	0.412	0.412			
		2"		Code	5001830	5001832	5001834	5001838	5001840	5001841	5001842	5001831	
				Feet / Carton	162	99	60	42	33	24	18	15	
				Minimum order	1 carton	1 carton	1 carton	1 carton	1 carton	1 carton	10 cartons	10 cartons	
				Truckload %	0.412	0.412	0.412	0.412	0.412	0.412	0.412	0.412	
		2 1/8"		Code	5001844	5002084	5002087	5001845	5002074	450145	-	-	
				Feet / Carton	192	99	75	42	33	24	18	15	
				Minimum order	1 carton	1 carton	1 carton	1 carton	10 cartons	10 cartons	10 cartons	10 cartons	
				Truckload %	0.412	0.329	0.412	0.412	0.412	0.412	0.412	0.412	
		2 1/2"		Code	5001846	5001849	5002066	5002102	5002065	5002064	5001850	5002063	
				Feet / Carton	99	75	42	33	24	18	15	12	
				Minimum order	1 carton	1 carton	1 carton	1 carton	1 carton	1 carton	10 cartons	10 cartons	
				Truckload %	0.329	0.412	0.412	0.412	0.412	0.412	0.412	0.329	
		2 5/8"		Code	5001852	5001853	5001854	5001855	467094	-	-	-	
				Feet / Carton	147	99	60	42	33	24	18	15	
				Minimum order	1 carton	1 carton	1 carton	1 carton	10 cartons	10 cartons	10 cartons	10 cartons	
				Truckload %	0.412	0.412	0.412	0.412	0.412	0.412	0.412	0.412	
3"		Code	5002078	5001858	5001860	5001861	5001862	5001863	5001865	5001856			
		Feet / Carton	90	60	42	33	24	18	15	12			
		Minimum order	1 carton	1 carton	1 carton	1 carton	1 carton	1 carton	10 cartons	10 cartons			
		Truckload %	0.412	0.412	0.412	0.412	0.412	0.412	0.412	0.412			
3 1/8"		Code	5001867	5002085	5001868	5002086	5002052	450146	-	-			
		Feet / Carton	108	75	42	33	24	18	15	12			
		Minimum order	1 carton	1 carton	1 carton	1 carton	10 cartons	10 cartons	10 cartons	10 cartons			
		Truckload %	0.412	0.412	0.412	0.412	0.412	0.412	0.412	0.412			
3 1/2"		Code		5001869	5002059	5002061	5001870	5002062	5002051	5002865			
		Feet / Carton		42	33	24	18	15	12	9			
		Minimum order		1 carton	1 carton	1 carton	10 cartons	10 cartons	10 cartons	10 cartons			
		Truckload %		0.412	0.412	0.412	0.412	0.412	0.412	0.410			
4"		Code	5001872	5001874	5001876	5001877	5001878	5001879	5001880	5001873			
		Feet / Carton	60	42	33	24	18	15	12	9			
		Minimum order	1 carton	1 carton	1 carton	1 carton	1 carton	1 carton	1 carton	10 cartons			
		Truckload %	0.412	0.412	0.412	0.412	0.412	0.412	0.412	0.412			
4 1/8"		Code	5001881	5001882	5001883	5002083	5002088	447992	-	-			
		Feet / Carton	72	42	33	24	18	15	12	12			
		Minimum order	1 carton	1 carton	1 carton	1 carton	10 cartons	10 cartons	10 cartons	10 cartons			
		Truckload %	0.412	0.412	0.412	0.412	0.412	0.412	0.412	0.412			
4 1/2"		Code		5001885	5002057	5002077	5002072	5002099	5002863	-			
		Feet / Carton		33	24	18	15	12	9	9			
		Minimum order		1 carton	1 carton	1 carton	10 cartons	10 cartons	10 cartons	10 cartons			
		Truckload %		0.412	0.412	0.412	0.412	0.412	0.410	0.412			
5"		Code		5001887	5001888	5001889	5001891	5001892	5001893	5001886			
		Feet / Carton		33	24	18	15	12	9	6			
		Minimum order		1 carton	1 carton	1 carton	10 cartons	1 carton	10 cartons	10 cartons			
		Truckload %		0.412	0.412	0.412	0.412	0.412	0.412	0.329			
5 1/8"		Code		5002712	5002710	447993	-	-	-	-			
		Feet / Carton		33	24	18	15	12	9	9			
		Minimum order		1 carton	10 cartons	10 cartons	10 cartons	10 cartons	10 cartons	10 cartons			
		Truckload %		0.412	0.412	0.412	0.412	0.412	0.412	0.412			

## ALLEY-K™ 850°F ASJ PIPE INSULATION (6" to 24" ID)

		CTS	IPS		1/2" Wall	1" Wall	1 1/2" Wall	2" Wall	2 1/2" Wall	3" Wall	3 1/2" Wall	4" Wall		
ASJ	CARTON	6"	Code		5001896	5001899	5001904	5001908	5001909	5001910	5001894			
			Feet / Carton		24	18	15	12	9	6	3			
			Minimum order		1 carton	1 carton	1 carton	1 carton	1 carton	1 carton	1 carton	10 cartons		
		Truckload %		0.412	0.412	0.412	0.412	0.412	0.329	0.242				
		6 1/8"	Code		5002706	5002711	-	-	-	-	-	-	-	
			Feet / Carton		24	18	15	12	9	6	6	6		
			Minimum order		1 carton	10 cartons	10 cartons	10 cartons	10 cartons	10 cartons	10 cartons	10 cartons		
		Truckload %		0.412	0.412	0.412	0.412	0.412	0.329	0.329				
		7"	Code		5001911	5001913	5001914	5001916	5002046	5002108	5002861			
			Feet / Carton		18	15	12	9	6	3	3			
			Minimum order		1 carton	1 carton	1 carton	10 cartons	10 cartons	10 cartons	10 cartons			
		Truckload %		0.412	0.412	0.412	0.412	0.329	0.242	0.240				
		8"	Code		5001920	5001921	5001923	5001924	5002109	5001926	5001919			
			Feet / Carton		15	12	9	6	6	3	3			
			Minimum order		1 carton	1 carton	1 carton	1 carton	1 carton	1 carton	10 cartons			
		Truckload %		0.412	0.412	0.412	0.329	0.410	0.242	0.242				
		9"	Code		5001928	5001929	5001930	5001931	5001933	5002081	5001927			
			Feet / Carton		12	9	6	3	3	3	3			
			Minimum order		1 carton	1 carton	1 carton	10 cartons	10 cartons	10 cartons	10 cartons			
		Truckload %		0.412	0.412	0.329	0.242	0.242	0.242	0.242				
		10"	Code		5001937	5001940	5002118	5001954	5001973	5001974	5001936			
			Feet / Carton		9	6	6	3	3	3	3			
			Minimum order		1 carton	1 carton	1 carton	1 carton	1 carton	1 carton	10 cartons			
		Truckload %		0.412	0.240	0.328	0.242	0.242	0.242	0.412				
11"	Code		5001977	5001984	5002110	5001985	5001986	5002106	5002107					
	Feet / Carton		6	6	6	3	3	3	3					
	Minimum order		1 carton	1 carton	1 carton	10 cartons	10 cartons	10 cartons	10 cartons					
Truckload %		0.240	0.329	0.328	0.242	0.242	0.410	0.410						
12"	Code		5001990	5002111	5002112	5001991	5001992	5001994	5001989					
	Feet / Carton		6	6	6	3	3	3	3					
	Minimum order		1 carton	1 carton	1 carton	1 carton	1 carton	10 cartons	10 cartons					
Truckload %		0.240	0.328	0.328	0.242	0.412	0.412	0.412	0.412					
14"	Code		5002114	5002115	5002116	5001996	5001998	5002049	5001995					
	Feet / Carton		6	6	6	3	3	3	3					
	Minimum order		1 carton	1 carton	1 carton	10 cartons	1 carton	10 cartons	10 cartons					
Truckload %		0.242	0.328	0.410	0.412	0.412	0.412	0.412	0.412					
15"	Code		5001999	5002000	5002001	5002860	5002070	5002080	5002073					
	Feet / Carton		6	6	6	3	3	3	3					
	Minimum order		10 cartons	10 cartons	10 cartons	10 cartons	10 cartons	10 cartons	10 cartons					
Truckload %		0.329	0.412	0.412	0.410	0.412	0.412	0.412						
16"	Code		5002117	5002003	5002004	5002005	5002006	5002007	5002002					
	Feet / Carton		6	6	6	3	3	3	3					
	Minimum order		1 carton	1 carton	1 carton	10 cartons	1 carton	10 cartons	10 cartons					
Truckload %		0.328	0.412	0.412	0.412	0.412	0.412	0.606						
17"	Code		5002008	5002009	5002011	5002093	5002824	5002091	5002849					
	Feet / Carton		6	6	3	3	3	3	3					
	Minimum order		10 cartons	10 cartons	10 cartons	10 cartons	10 cartons	10 cartons	10 cartons					
Truckload %		0.412	0.412	0.412	0.412	0.412	0.412	0.412						
18"	Code		5002013	5002014	5002015	5002018	5002020	5002021	5002012					
	Feet / Carton		6	6	3	3	3	3	3					
	Minimum order		1 carton	1 carton	1 carton	10 cartons	10 cartons	10 cartons	10 cartons					
Truckload %		0.412	0.412	0.412	0.412	0.412	0.412	0.606						
19"	Code		5002048	5002022	5002023	5002079	5002071	5002802	5002801					
	Feet / Carton		6	3	3	3	3	3	3					
	Minimum order		10 cartons	10 cartons	10 cartons	10 cartons	10 cartons	10 cartons	10 cartons					
Truckload %		0.412	0.412	0.412	0.412	0.412	0.412	0.606						
20"	Code		5002024	5002025	5002027	5002029	5002030	5002031	5002082					
	Feet / Carton		6	3	3	3	3	3	3					
	Minimum order		1 carton	1 carton	1 carton	10 cartons	10 cartons	10 cartons	10 cartons					
Truckload %		0.412	0.412	0.412	0.412	0.606	0.606	0.606						
21"	Code		5002060	5002032	5002033	5001805	5002097	5002800	5002833					
	Feet / Carton		6	6	6	6	3	3	6					
	Minimum order		10 cartons	10 cartons	10 cartons	10 cartons	10 cartons	10 cartons	10 cartons					
Truckload %		0.412	0.606	0.606	0.606	0.606	0.606	0.606						
22"	Code		5002034	5002035	5002036	5002037	5002038	5002795	5002793					
	Feet / Carton		6	6	6	6	3	3	3					
	Minimum order		10 cartons	10 cartons	10 cartons	10 cartons	10 cartons	10 cartons	10 cartons					
Truckload %		0.606	0.606	0.606	0.606	0.606	0.606	0.606						
24"	Code		5002040	5002041	5002044	5002098	5002104	5002791	5002806					
	Feet / Carton		6	6	6	3	3	3	3					
	Minimum order		10 cartons	1 carton	1 carton	10 cartons	10 cartons	10 cartons	10 cartons					
Truckload %		0.606	0.606	0.606	0.606	0.606	0.606	0.781						

## ALLEY-K™ 850°F PLAIN PIPE INSULATION (5/8" to 5 1/8" ID)

		CTS	IPS		1/2" Wall	1" Wall	1 1/2" Wall	2" Wall	2 1/2" Wall	3" Wall	3 1/2" Wall	4" Wall		
PLAIN	CARTON	5/8"		Code	-	-	-	-						
				Feet / Carton	330	126	81	99						
				Minimum order	10 cartons	10 cartons	10 cartons	10 cartons						
				Truckload %	0.242	0.242	0.242	0.412						
		7/8"	1/2"	Code	-	-	-	-						
				Feet / Carton	255	126	60	75						
				Minimum order	10 cartons	10 cartons	10 cartons	10 cartons						
				Truckload %	0.242	0.242	0.242	0.412						
		1 1/8"	3/4"	Code	-	436780	-	-	-					
				Feet / Carton	204	126	60	75	42					
				Minimum order	10 cartons	10 cartons	10 cartons	10 cartons	10 cartons					
				Truckload %	0.242	0.242	0.242	0.412	0.412					
		1 3/8"	1"	Code	-	-	-	-	-	-				
				Feet / Carton	168	135	75	60	42	33				
				Minimum order	10 cartons	10 cartons	1 carton	10 cartons	10 cartons	10 cartons				
				Truckload %	0.242	0.329	0.329	0.412	0.412	0.410				
		1 5/8"	1 1/4"	Code	-	-	-	-	-	-				
				Feet / Carton	126	135	60	60	42	33				
				Minimum order	10 cartons	10 cartons	10 cartons	10 cartons	10 cartons	10 cartons				
				Truckload %	0.242	0.329	0.329	0.412	0.412	0.410				
		1 7/8"	1 1/2"	Code	-	436781	-	-	-	-	524147	-	-	
				Feet / Carton	117	99	60	42	33	24	18	15		
				Minimum order	10 cartons	10 cartons	1 carton	10 cartons	10 cartons	10 cartons	10 cartons	10 cartons		
				Truckload %	0.242	0.329	0.329	0.412	0.412	0.412	0.412	0.412		
		2"	2"	Code	-	436782	-	-	-	-	524151	-	-	
				Feet / Carton	162	99	60	42	33	24	18	15		
				Minimum order	10 cartons	1 carton	1 carton	1 carton	10 cartons	10 cartons	10 cartons	10 cartons		
				Truckload %	0.412	0.412	0.412	0.412	0.412	0.412	0.412	0.412		
		2 1/8"		Code	-	-	-	-	-	-	-	-	-	
				Feet / Carton	192	99	75	42	33	24	18	15		
				Minimum order	10 cartons	10 cartons	10 cartons	10 cartons	10 cartons	10 cartons	10 cartons	10 cartons		
				Truckload %	0.412	0.329	0.412	0.412	0.412	0.412	0.412	0.412		
		2 3/8"	2 1/2"	Code		-	-	-	-	-	-	-	-	
				Feet / Carton		75	42	33	24	18	15	12		
				Minimum order		10 cartons	1 carton	10 cartons	10 cartons	10 cartons	10 cartons	10 cartons		
				Truckload %		0.412	0.412	0.412	0.412	0.412	0.412	0.329		
		2 5/8"		Code		-	-	-	-	-	-	-	-	
				Feet / Carton		99	60	42	33	24	18	15		
				Minimum order		10 cartons	10 cartons	10 cartons	10 cartons	10 cartons	10 cartons	10 cartons		
				Truckload %		0.412	0.412	0.412	0.412	0.412	0.412	0.412		
3"	3"	Code		470188	-	524140	-	-	-	-	-			
		Feet / Carton		60	42	33	24	18	15	12				
		Minimum order		1 carton	1 carton	1 carton	10 cartons	10 cartons	10 cartons	10 cartons				
		Truckload %		0.412	0.412	0.412	0.412	0.412	0.412	0.412				
3 1/8"		Code		-	-	-	-	-	-	-	-			
		Feet / Carton		75	42	33	24	18	15	12				
		Minimum order		10 cartons	10 cartons	10 cartons	10 cartons	10 cartons	10 cartons	10 cartons				
		Truckload %		0.412	0.412	0.412	0.412	0.412	0.412	0.412				
3 1/2"	3 1/2"	Code		-	-	-	-	-	-	-	-			
		Feet / Carton		42	33	24	18	15	12	9				
		Minimum order		1 carton	1 carton	10 cartons	10 cartons	10 cartons	10 cartons	10 cartons				
		Truckload %		0.412	0.412	0.412	0.412	0.412	0.412	0.410				
4"	4"	Code		436783	-	-	-	-	-	-	-			
		Feet / Carton		42	33	24	18	15	12	9				
		Minimum order		1 carton	1 carton	1 carton	10 cartons	10 cartons	10 cartons	10 cartons				
		Truckload %		0.412	0.412	0.412	0.412	0.412	0.412	0.412				
4 1/8"		Code		-	-	-	-	-	-	-	-			
		Feet / Carton		42	33	24	18	15	12	12				
		Minimum order		10 cartons	10 cartons	10 cartons	10 cartons	10 cartons	10 cartons	10 cartons				
		Truckload %		0.412	0.412	0.412	0.412	0.412	0.412	0.412				
4 1/2"	4 1/2"	Code		-	-	-	-	-	-	-	-			
		Feet / Carton		33	24	18	15	12	9	9				
		Minimum order		10 cartons	1 carton	10 cartons	10 cartons	10 cartons	10 cartons	10 cartons				
		Truckload %		0.412	0.412	0.412	0.412	0.412	0.410	0.412				
5"	5"	Code		436784	-	-	-	-	-	-	-			
		Feet / Carton		33	24	18	15	12	9	6				
		Minimum order		10 cartons	10 cartons	10 cartons	10 cartons	10 cartons	10 cartons	10 cartons				
		Truckload %		0.412	0.412	0.412	0.412	0.412	0.412	0.329				
5 1/8"	5 1/8"	Code		-	-	-	-	-	-	-	-			
		Feet / Carton		33	24	18	15	12	9	9				
		Minimum order		10 cartons	10 cartons	10 cartons	10 cartons	10 cartons	10 cartons	10 cartons				
		Truckload %		0.412	0.412	0.412	0.412	0.412	0.412	0.412				



## ALLEY-K™ 850°F PLAIN PIPE INSULATION (6" to 24" ID)

		CTS	IPS		½" Wall	1" Wall	1 ½" Wall	2" Wall	2 ½" Wall	3" Wall	3 ½" Wall	4" Wall	
PLAIN	CARTON		6"	Code		436787	447994	-	500288	-	-	-	
		Feet / Carton			24	18	15	12	9	6	3		
		Minimum order			1 carton	1 carton	1 carton	10 cartons	10 cartons	10 cartons	10 cartons		
		Truckload %			0.412	0.412	0.412	0.412	0.412	0.329	0.242		
			6 ⅝"	Code		-	-	-	-	-	-	-	-
		Feet / Carton			24	18	15	12	9	6	6		
		Minimum order			10 cartons	10 cartons	10 cartons	10 cartons	10 cartons	10 cartons	10 cartons		
		Truckload %			0.412	0.412	0.412	0.412	0.412	0.329	0.329		
			7"	Code		-	-	-	-	-	-	-	-
		Feet / Carton			18	15	12	9	6	3	3		
		Minimum order			10 cartons	1 carton	1 carton	10 cartons	10 cartons	10 cartons	10 cartons		
		Truckload %			0.412	0.412	0.412	0.412	0.329	0.242	0.240		
			8"	Code		447995	-	524144	-	-	-	-	425236
		Feet / Carton			15	12	9	6	6	3	3		
		Minimum order			1 carton	1 carton	1 carton	10 cartons	10 cartons	10 cartons	10 cartons		
		Truckload %			0.412	0.412	0.412	0.329	0.410	0.242	0.242		
			9"	Code		-	-	-	-	-	-	-	-
		Feet / Carton			12	9	6	3	3	3	3		
		Minimum order			10 cartons	10 cartons	10 cartons	10 cartons	10 cartons	10 cartons	10 cartons		
		Truckload %			0.412	0.412	0.329	0.242	0.242	0.242	0.242		
			10"	Code		-	-	-	-	-	-	-	425223
		Feet / Carton			9	6	6	3	3	3	3		
		Minimum order			1 carton	1 carton	1 carton	10 cartons	10 cartons	10 cartons	10 cartons		
		Truckload %			0.412	0.240	0.328	0.242	0.242	0.242	0.412		
	11"	Code		-	-	-	463583	-	-	-	-		
Feet / Carton			6	6	6	3	3	3	3				
Minimum order			10 cartons	10 cartons	10 cartons	10 cartons	10 cartons	10 cartons	10 cartons				
Truckload %			0.240	0.329	0.328	0.242	0.242	0.410	0.410				
	12"	Code		-	-	-	463592	-	-	-	-		
Feet / Carton			6	6	6	3	3	3	3				
Minimum order			10 cartons	1 carton	1 carton	10 cartons	10 cartons	10 cartons	10 cartons				
Truckload %			0.240	0.328	0.328	0.242	0.412	0.412	0.412				
	14"	Code		-	-	-	-	-	-	-	-		
Feet / Carton			6	6	6	3	3	3	3				
Minimum order			10 cartons	10 cartons	1 carton	10 cartons	10 cartons	10 cartons	10 cartons				
Truckload %			0.242	0.328	0.410	0.412	0.412	0.412	0.412				
	15"	Code		-	-	-	-	-	-	-	-		
Feet / Carton			6	6	6	3	3	3	3				
Minimum order			10 cartons	10 cartons	10 cartons	10 cartons	10 cartons	10 cartons	10 cartons				
Truckload %			0.329	0.412	0.412	0.410	0.412	0.412	0.412				
	16"	Code		-	-	-	-	-	5004768	-	-		
Feet / Carton			6	6	6	3	3	3	3				
Minimum order			10 cartons	10 cartons	1 carton	10 cartons	10 cartons	10 cartons	10 cartons				
Truckload %			0.328	0.412	0.412	0.412	0.412	0.412	0.606				
	17"	Code		-	-	-	-	-	-	-	-		
Feet / Carton			6	6	3	3	3	3	3				
Minimum order			10 cartons	10 cartons	10 cartons	10 cartons	10 cartons	10 cartons	10 cartons				
Truckload %			0.412	0.412	0.412	0.412	0.412	0.412	0.412				
	18"	Code		-	-	-	-	-	-	-	-		
Feet / Carton			6	6	3	3	3	3	3				
Minimum order			10 cartons	10 cartons	10 cartons	10 cartons	10 cartons	10 cartons	10 cartons				
Truckload %			0.412	0.412	0.412	0.412	0.412	0.412	0.606				
	19"	Code		-	-	-	-	-	-	-	-		
Feet / Carton			6	3	3	3	3	3	3				
Minimum order			10 cartons	10 cartons	10 cartons	10 cartons	10 cartons	10 cartons	10 cartons				
Truckload %			0.412	0.412	0.412	0.412	0.412	0.412	0.606				
	20"	Code		-	-	-	-	-	-	-	-		
Feet / Carton			6	3	3	3	3	3	3				
Minimum order			10 cartons	10 cartons	10 cartons	10 cartons	10 cartons	10 cartons	10 cartons				
Truckload %			0.412	0.412	0.412	0.412	0.606	0.606	0.606				
	21"	Code		-	-	-	-	513483	-	-	-		
Feet / Carton			6	6	6	6	3	3	3				
Minimum order			10 cartons	10 cartons	10 cartons	10 cartons	10 cartons	10 cartons	10 cartons				
Truckload %			0.412	0.606	0.606	0.606	0.606	0.606	0.606				
	22"	Code		-	-	-	-	-	-	-	-		
Feet / Carton			6	6	6	6	3	3	3				
Minimum order			10 cartons	10 cartons	10 cartons	10 cartons	10 cartons	10 cartons	10 cartons				
Truckload %			0.606	0.606	0.606	0.606	0.606	0.606	0.606				
	24"	Code		-	-	-	-	-	-	-	-		
Feet / Carton			6	6	6	3	3	3	3				
Minimum order			10 cartons	10 cartons	10 cartons	10 cartons	10 cartons	10 cartons	10 cartons				
Truckload %			0.606	0.606	0.606	0.606	0.606	0.606	0.606				

## ALLEY-K™ 850°F ASJ PIPE INSULATION (5/8" to 5" ID)

		CTS	IPS		1/2" Wall	1" Wall	1 1/2" Wall	2" Wall	2 1/2" Wall	3" Wall	3 1/2" Wall	4" Wall		
ASJ	POLYBAG	5/8"		Code	-	-	-	-						
				Feet / Bag	330	126	126	99						
				Minimum order	10 bags	10 bags	10 bags	10 bags						
		7/8"	1/2"	Code	-	-	-	-						
				Feet / Bag	255	126	99	75						
				Minimum order	10 bags	10 bags	10 bags	10 bags						
		1 1/8"	3/4"	Code	-	-	-	-	-					
				Feet / Bag	204	126	99	75	-					
				Minimum order	10 bags	10 bags	10 bags	10 bags	10 bags					
		1 3/8"	1"	Code	-	-	-	-	-	-				
				Feet / Bag	168	135	99	60	-	-				
				Minimum order	10 bags	10 bags	10 bags	10 bags	10 bags	10 bags				
		1 5/8"	1 1/4"	Code	-	-	-	-	-	-				
				Feet / Bag	126	135	75	60	42	-				
				Minimum order	10 bags	10 bags	10 bags	10 bags	10 bags	10 bags				
		1 7/8"	1 1/2"	Code	-	-	-	-	-	-				
				Feet / Bag	117	99	75	42	33	24				
				Minimum order	10 bags	10 bags	10 bags	10 bags	10 bags	10 bags				
		2 1/8"	2"	Code	-	-	-	-	-	-	-			
				Feet / Bag	162	99	60	42	33	24	15	15		
				Minimum order	10 bags	10 bags	10 bags	10 bags	10 bags	10 bags	10 bags	10 bags		
		2 3/8"	2 1/2"	Code	-	-	-	-	-	-	-	-		
				Feet / Bag	192	99	75	42	33	24	15	15		
				Minimum order	10 bags	10 bags	10 bags	10 bags	10 bags	10 bags	10 bags	10 bags		
		2 5/8"	3"	Code	-	-	-	-	-	-	-	-		
				Feet / Bag	192	99	60	42	33	24	15	15		
				Minimum order	10 bags	10 bags	10 bags	10 bags	10 bags	10 bags	10 bags	10 bags		
		3 1/8"	3 1/2"	Code	-	-	-	-	-	-	-	-		
Feet / Bag	162			99	60	42	33	24	15	15				
Minimum order	10 bags			10 bags	10 bags	10 bags	10 bags	10 bags	10 bags	10 bags				
3 3/8"	4"	Code	-	-	-	-	-	-	-	-				
		Feet / Bag	162	99	60	42	33	24	15	15				
		Minimum order	10 bags	10 bags	10 bags	10 bags	10 bags	10 bags	10 bags	10 bags				
3 5/8"	4 1/2"	Code	-	-	-	-	-	-	-	-				
		Feet / Bag	162	99	60	42	33	24	15	15				
		Minimum order	10 bags	10 bags	10 bags	10 bags	10 bags	10 bags	10 bags	10 bags				
4 1/8"	5"	Code	-	-	-	-	-	-	-	-				
		Feet / Bag	162	99	60	42	33	24	15	15				
		Minimum order	10 bags	10 bags	10 bags	10 bags	10 bags	10 bags	10 bags	10 bags				
4 3/8"	5 1/2"	Code	-	-	-	-	-	-	-	-				
		Feet / Bag	162	99	60	42	33	24	15	15				
		Minimum order	10 bags	10 bags	10 bags	10 bags	10 bags	10 bags	10 bags	10 bags				
4 5/8"		Code	-	-	-	-	-	-	-	-				
		Feet / Bag	162	99	60	42	33	24	15	15				
		Minimum order	10 bags	10 bags	10 bags	10 bags	10 bags	10 bags	10 bags	10 bags				
5 1/8"		Code	-	-	-	-	-	-	-	-				
		Feet / Bag	162	99	60	42	33	24	15	15				
		Minimum order	10 bags	10 bags	10 bags	10 bags	10 bags	10 bags	10 bags	10 bags				

## ALLEY-K™ 850°F ASJ PIPE INSULATION (5 1/8" to 24" ID)

		CTS	IPS		1/2" Wall	1" Wall	1 1/2" Wall	2" Wall	2 1/2" Wall	3" Wall	3 1/2" Wall	4" Wall
ASJ	POLYBAG	6"	Code		-	-	-	-	-	-	-	-
			Feet / Bag		24	18	12	12	12	6	6	
			Minimum order		10 bags	10 bags	10 bags	10 bags	10 bags	10 bags	10 bags	
		6 1/8"	Truckload %		0.348	0.341	0.260	0.329	0.250	0.347	0.260	
			Code		-	-	-	-	-	-	-	
			Feet / Bag		24	18	12	12	12	6	6	
		7"	Minimum order		10 bags	10 bags	10 bags	10 bags	10 bags	10 bags	10 bags	
			Truckload %		0.348	0.341	0.260	0.329	0.347	0.260	0.240	
			Code		-	-	-	-	-	-	-	
		8"	Feet / Bag		18	12	12	12	12	6	3	
			Minimum order		10 bags	10 bags	10 bags	10 bags	10 bags	10 bags	10 bags	
			Truckload %		0.341	0.250	0.313	0.347	0.521	0.284	0.160	
		9"	Code		-	-	-	-	-	-	-	
			Feet / Bag		12	12	12	12	6	6	6	
			Minimum order		10 bags	10 bags	10 bags	10 bags	10 bags	10 bags	10 bags	
		10"	Truckload %		0.250	0.313	0.347	0.521	0.260	0.284	0.355	
			Code		-	-	-	-	-	-	-	
			Feet / Bag		12	12	12	6	6	6	6	
		11"	Minimum order		10 bags	10 bags	10 bags	10 bags	10 bags	10 bags	10 bags	
			Truckload %		0.313	0.347	0.446	0.260	0.284	0.313	0.417	
			Code		-	-	-	-	5002119	5002120	5002122	
		12"	Feet / Bag		12	12	6	6	6	6	6	
			Minimum order		10 bags	10 bags	10 bags	10 bags	10 bags	10 bags	10 bags	
			Truckload %		0.347	0.446	0.260	0.294	0.313	0.417	0.417	
		14"	Code		-	-	-	-	-	-	-	
			Feet / Bag		12	12	6	6	6	6	6	
			Minimum order		10 bags	10 bags	10 bags	10 bags	10 bags	10 bags	10 bags	
		15"	Truckload %		0.521	0.284	0.313	0.417	0.417	0.417	0.446	
			Code		-	5002128	5002134	5002132	5002218	5002135	-	
			Feet / Bag		12	6	6	6	6	6	6	
		16"	Minimum order		10 bags	10 bags	10 bags	10 bags	10 bags	10 bags	10 bags	
			Truckload %		0.625	0.313	0.417	0.417	0.446	0.481	0.521	
			Code		5002137	-	5002138	-	5002139	-	-	
		17"	Feet / Bag		6	6	6	6	6	6	6	
			Minimum order		10 bags	10 bags	10 bags	10 bags	10 bags	10 bags	10 bags	
			Truckload %		0.313	0.417	0.417	0.417	0.481	0.568	0.625	
		18"	Code		5002143	-	5002146	5002145	5002151	5002152	-	
			Feet / Bag		6	6	6	6	6	6	6	
			Minimum order		10 bags	10 bags	10 bags	10 bags	10 bags	10 bags	10 bags	
		19"	Truckload %		0.417	0.417	0.417	0.481	0.521	0.625	0.781	
			Code		-	5002153	-	-	-	-	-	
			Feet / Bag		6	6	6	6	6	6	6	
		20"	Minimum order		10 bags	10 bags	10 bags	10 bags	10 bags	10 bags	10 bags	
			Truckload %		0.412	0.417	0.481	0.521	0.625	0.781	0.781	
			Code		5002155	5002154	5002157	5002156	5002159	5002161	-	
		21"	Feet / Bag		6	6	6	6	6	6	6	
			Minimum order		10 bags	10 bags	10 bags	10 bags	10 bags	10 bags	10 bags	
			Truckload %		0.417	0.481	0.521	0.625	0.781	0.781	0.781	
		22"	Code		-	5002162	-	-	5002163	-	-	
			Feet / Bag		6	6	6	6	6	6	6	
			Minimum order		10 bags	10 bags	10 bags	10 bags	10 bags	10 bags	10 bags	
		24"	Truckload %		0.481	0.625	0.376	0.694	0.781	0.781	0.781	
			Code		5002219	-	5002166	5002167	5002168	5002170	5002171	
			Feet / Bag		6	6	6	6	6	6	6	
		25"	Minimum order		10 bags	10 bags	10 bags	10 bags	10 bags	10 bags	10 bags	
			Truckload %		0.369	0.625	0.694	0.781	0.781	0.781	1.042	
			Code		-	5002172	5002173	-	-	-	-	
		26"	Feet / Bag		6	6	6	6	6	6	6	
			Minimum order		10 bags	10 bags	10 bags	10 bags	10 bags	10 bags	10 bags	
			Truckload %		0.625	0.694	0.781	0.781	0.781	1.042	-	
		27"	Code		5002175	5002176	5002177	-	-	-	-	
			Feet / Bag		6	6	6	6	-	-	-	
			Minimum order		10 bags	10 bags	10 bags	1 Bag	-	-	-	
		28"	Truckload %		0.694	0.781	0.781	0.781	-	-	-	
			Code		-	5002179	5002180	-	5002220	-	-	
			Feet / Bag		6	6	6	-	3	-	-	
		29"	Minimum order		10 bags	10 bags	10 bags	-	10 bags	-	-	
			Truckload %		0.781	0.781	1.042	-	0.606	-	-	

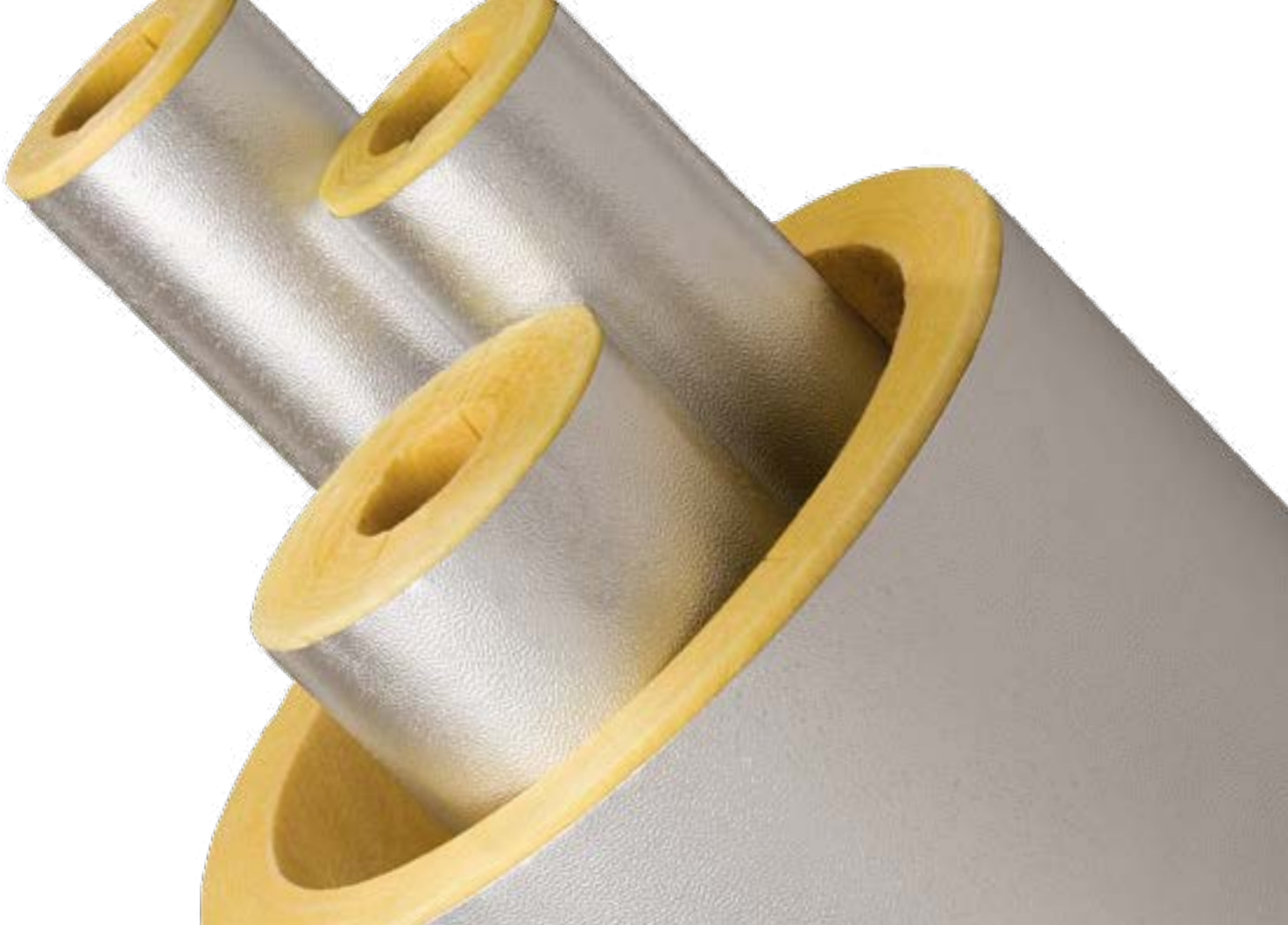
## ALLEY-K™ 850°F PLAIN PIPE INSULATION (5/8" to 5 1/8" ID)

		CTS	IPS		1/2" Wall	1" Wall	1 1/2" Wall	2" Wall	2 1/2" Wall	3" Wall	3 1/2" Wall	4" Wall	
<b>PLAIN</b>	<b>POLYBAG</b>	5/8"		Code	-	-	-	-					
				Feet / Bag	330	126	126	99					
				Minimum order	10 bags	10 bags	10 bags	10 bags					
		7/8"	1/2"	Code	-	5002787	5002786	5002785					
				Feet / Bag	255	126	99	75					
				Minimum order	10 bags	10 bags	10 bags	10 bags					
		1 1/8"	3/4"	Code	-	5002784	5002783	5002782	-				
				Feet / Bag	204	126	99	75					
				Minimum order	10 bags	10 bags	10 bags	10 bags	10 bags				
		1 3/8"	1"	Code	-	5002788	5002823	5002822	-	-			
				Feet / Bag	168	135	99	60					
				Minimum order	10 bags	10 bags	10 bags	10 bags	10 bags	10 bags			
		1 5/8"	1 1/4"	Code	-	5002777	5002776	5002775	-	-			
				Feet / Bag	126	135	75	60	42				
				Minimum order	10 bags	10 bags	10 bags	10 bags	10 bags	10 bags			
		1 7/8"	1 1/2"	Code	-	-	5002779	5002778	-	-			
				Feet / Bag	117	99	75	42	33	24			
				Minimum order	10 bags	10 bags	10 bags	10 bags	10 bags	10 bags			
		2"	2"	Code	-	-	-	-	-	-	-	-	-
				Feet / Bag	1 62	99	60	42	33	24	15	15	
				Minimum order	10 bags	10 bags	10 bags	10 bags	10 bags	10 bags	10 bags	10 bags	
		2 1/8"	2 1/8"	Code	-	-	-	-	-	-	-	-	-
				Feet / Bag	192	99	75	42	33	24	15	15	
				Minimum order	10 bags	10 bags	10 bags	10 bags	10 bags	10 bags	10 bags	10 bags	
		2 1/4"	2 1/2"	Code	-	-	-	-	425225	-	-	-	-
				Feet / Bag		75	42	33	24	18	15	12	
				Minimum order		10 bags	10 bags	10 bags	10 bags	10 bags	10 bags	10 bags	
		2 3/8"	2 3/8"	Code	-	-	-	-	-	-	-	-	-
				Feet / Bag		99	60	42	33	24	15	15	
				Minimum order		10 bags	10 bags	10 bags	10 bags	10 bags	10 bags	10 bags	
		2 7/8"	3"	Code	-	-	-	-	-	-	-	-	-
				Feet / Bag		60	42	33	24	18	15	12	
				Minimum order		10 bags	10 bags	10 bags	10 bags	10 bags	10 bags	10 bags	
		3 1/8"	3 1/8"	Code	-	-	-	-	-	-	-	-	-
				Feet / Bag		75	42	33	24	18	15	15	
				Minimum order		10 bags	10 bags	10 bags	10 bags	10 bags	10 bags	10 bags	
		3 1/2"	3 1/2"	Code	-	-	-	-	-	-	-	-	-
				Feet / Bag		42	33	24	18	15	12	12	
				Minimum order		10 bags	10 bags	10 bags	10 bags	10 bags	10 bags	10 bags	
		3 3/4"	4"	Code	-	-	-	-	-	-	-	-	-
				Feet / Bag		42	33	24	18	15	12	9	
				Minimum order		10 bags	10 bags	10 bags	10 bags	10 bags	10 bags	10 bags	
		4 1/8"	4 1/8"	Code	-	-	-	-	-	-	-	-	-
				Feet / Bag		42	33	24	18	15	12	12	
				Minimum order		10 bags	10 bags	10 bags	10 bags	10 bags	10 bags	10 bags	
		4 1/2"	4 1/2"	Code	-	-	-	-	-	-	-	-	-
				Feet / Bag		33	24	18	15	12	9	9	
				Minimum order		10 bags	10 bags	10 bags	10 bags	10 bags	10 bags	10 bags	
4 3/4"	5"	Code	-	-	-	-	-	-	-	-	-		
		Feet / Bag		33	24	18	12	12	9	6			
		Minimum order		10 bags	10 bags	10 bags	10 bags	10 bags	10 bags	10 bags			
5 1/8"	5 1/8"	Code	-	-	-	-	-	-	-	-	-		
		Feet / Bag		33	24	15	12	12	9	9			
		Minimum order		10 bags	10 bags	10 bags	10 bags	10 bags	10 bags	10 bags			

## ALLEY-K™ 850°F PLAIN PIPE INSULATION (5 1/8" to 24" ID)

		CTS	IPS		1/2" Wall	1" Wall	1 1/2" Wall	2" Wall	2 1/2" Wall	3" Wall	3 1/2" Wall	4" Wall	
PLAIN	POLYBAG		6"	Code							-	-	
		Feet / Bag			24	18	12	12	12	6	6		
		Minimum order			10 bags	10 bags	10 bags	10 bags	10 bags	10 bags	10 bags		
		Truckload %		0.348	0.341	0.260	0.329	0.347	0.240	0.260			
			6 1/8"	Code		-	-	-	-	-	-	-	-
		Feet / Bag			24	18	12	12	12	6	6		
		Minimum order			10 bags	10 bags	10 bags	10 bags	10 bags	10 bags	10 bags		
		Truckload %		0.348	0.341	0.260	0.329	0.347	0.240	0.240			
			7"	Code							5003193	-	-
		Feet / Bag			18	12	182	12	12	6	3		
		Minimum order			10 bags	10 bags	10 bags	10 bags	10 bags	10 bags	10 bags		
		Truckload %		0.341	0.250	0.313	0.347	0.521	0.284	0.160			
			8"	Code							5003294	-	-
		Feet / Bag			12	12	12	12	6	6	6		
		Minimum order			10 bags	10 bags	10 bags	10 bags	10 bags	10 bags	10 bags		
		Truckload %		0.250	0.313	0.347	0.521	0.260	0.284	0.355			
			9"	Code									
		Feet / Bag			12	12	12	6	6	6	6		
		Minimum order			10 bags	10 bags	10 bags	10 bags	10 bags	10 bags	10 bags		
		Truckload %		0.313	0.347	0.446	0.260	0.284	0.313	0.417			
			10"	Code							5003301	-	-
		Feet / Bag			12	12	6	6	6	6	6		
		Minimum order			10 bags	10 bags	10 bags	10 bags	10 bags	10 bags	10 bags		
		Truckload %		0.347	0.446	0.260	0.294	0.313	0.417	0.417			
			11"	Code		5002821							
		Feet / Bag			12	12	6	6	6	6	6		
		Minimum order			10 bags	10 bags	10 bags	10 bags	10 bags	10 bags	10 bags		
		Truckload %		0.446	0.521	0.284	0.313	0.417	0.417	0.446			
			12"	Code		5002820				5003363	5002608	-	-
		Feet / Bag			12	6	6	6	6	6	6		
		Minimum order			10 bags	10 bags	10 bags	10 bags	10 bags	10 bags	10 bags		
		Truckload %		0.521	0.284	0.313	0.417	0.417	0.446	0.521			
			14"	Code		5002819	5003303	5003305			5002584	-	-
		Feet / Bag			12	6	6	6	6	6	6		
		Minimum order			10 bags	10 bags	10 bags	10 bags	10 bags	10 bags	10 bags		
		Truckload %		0.625	0.313	0.418	0.417	0.446	0.481	0.521			
			15"	Code		5002818	5003306	5003307				-	-
		Feet / Bag			6	6	6	6	6	6	6		
		Minimum order			10 bags	10 bags	10 bags	10 bags	10 bags	10 bags	10 bags		
		Truckload %		0.313	0.417	0.417	0.417	0.481	0.568	0.625			
			16"	Code		5002817	5003309	5003310			5002582	-	-
		Feet / Bag			6	6	6	6	6	6	6		
		Minimum order			10 bags	10 bags	10 bags	10 bags	10 bags	10 bags	10 bags		
		Truckload %		0.417	0.417	0.417	0.481	0.521	0.625	0.781			
			17"	Code			5002524	5002525				-	-
		Feet / Bag			6	6	6	6	6	6	6		
		Minimum order			10 bags	10 bags	10 bags	10 bags	10 bags	10 bags	10 bags		
		Truckload %		0.412	0.417	0.481	0.521	0.625	0.781	0.781			
			18"	Code		5002847	5002526	5002846				-	-
		Feet / Bag			6	6	6	6	6	6	6		
		Minimum order			10 bags	10 bags	10 bags	10 bags	10 bags	10 bags	10 bags		
		Truckload %		0.417	0.481	0.521	0.625	0.781	0.781	0.781			
			19"	Code		5002814	5002845	5002844				-	-
		Feet / Bag			6	6	6	6	6	6	6		
		Minimum order			10 bags	10 bags	10 bags	10 bags	10 bags	10 bags	10 bags		
		Truckload %		0.481	0.625	0.376	0.694	0.781	0.781	0.781			
			20"	Code		5002843	5002841	5002839			5002609	-	-
		Feet / Bag			6	6	6	6	6	6	6		
		Minimum order			10 bags	10 bags	10 bags	10 bags	10 bags	10 bags	10 bags		
		Truckload %		0.369	0.625	0.694	0.781	0.781	0.781	1.042			
			21"	Code		5002837	5002835	5002834				-	-
		Feet / Bag			6	6	6	6	6	6	6		
		Minimum order			10 bags	10 bags	10 bags	10 bags	10 bags	10 bags	10 bags		
		Truckload %		0.625	0.694	0.781	0.781	0.781	0.781	1.042			
			22"	Code		5002812	5002810	5002832				-	-
		Feet / Bag			6	6	6	6					
		Minimum order			10 bags	10 bags	10 bags	10 bags					
		Truckload %		0.694	0.781	0.781	0.781						
			24"	Code		5002831	5002829	5002850			5002586	-	-
		Feet / Bag			6	6	6			3			
		Minimum order			10 bags	10 bags	10 bags			10 bags			
		Truckload %		0.781	0.781	1.042			0.606				





## AK-Clad™

**AK-Clad™** pipe insulation is a preformed insulation product composed of high quality glass fibers, bonded together with a thermosetting resin. AK-Clad™ pipe insulation comes with factory applied 5-ply weather and abuse resistant jacketing with self-sealing lap. Butt strips are also supplied.

**Manson AK-Clad™** pipe insulation is intended for indoor and outdoor installation on industrial and commercial mechanical system piping. Typical applications include, but are not limited to, steam, condensate, process, chilled, and domestic water piping for new or retro-fit power generation, petro-chemical, pulp and paper, institutional, and educational construction projects.

## AK-CLAD™ PRODUCT CODES

	CTS	IPS	1" Wall	1 ½" Wall	2" Wall	2 ½" Wall	3" Wall	3 ½" Wall	4" Wall
PRODUCT CODES	1 ⅛"	¾"	-	466281	465334	-	-	-	-
	-	1"	-	465335	465336	-	465338	-	-
	1 ⅜"	-	-	-	-	-	-	-	-
	1 ⅝"	-	-	-	-	-	-	-	-
	-	1 ¼"	-	470756	-	-	-	-	-
	-	1 ½"	-	465587	465588	-	497557	-	-
	-	2"	469663	465589	465590	-	497556	-	-
	2 ⅛"	-	-	-	-	-	465591	-	-
	-	2 ½"	470767	465593	470915	-	497552	-	-
	2 ⅝"	-	-	-	-	-	465592	-	-
	-	3"	470916	465594	465595	-	497554	-	-
	3 ⅛"	-	-	-	-	-	465596	-	-
	-	3 ½"	-	-	-	-	-	-	-
	3 ⅝"	-	-	-	-	-	-	-	-
	-	4"	-	465339	465337	-	-	-	-
	4 ⅛"	-	-	-	-	-	-	-	-
	-	4 ½"	-	-	-	-	-	-	-
	-	5"	-	465333	-	-	-	-	-
	5 ⅛"	-	-	-	-	-	-	-	-
	-	6"	-	465332	-	-	465331	-	465330
	6 ⅛"	-	-	-	-	-	-	-	-
	-	7"	-	-	-	-	-	-	-
	-	8"	-	465329	465328	-	465327	-	-
	-	9"	-	-	-	-	-	-	-
-	10"	-	-	-	-	465326	-	-	
-	11"	-	-	-	-	-	-	-	
-	12"	-	465325	-	-	-	-	-	
-	14"	-	-	-	-	465319	-	-	
-	15"	-	-	-	-	-	-	-	
-	16"	-	-	-	-	-	-	-	
-	17"	-	-	-	-	-	-	-	
-	18"	-	-	-	-	-	-	-	
-	19"	-	-	-	-	-	-	-	
-	20"	-	-	-	-	-	-	-	
-	21"	-	-	-	-	-	-	-	
-	22"	-	-	-	-	-	-	-	
-	23"	-	-	-	-	-	-	-	
-	24"	-	-	-	-	-	-	-	

All items are single layer except those in top-right boxed area in grey

Custom Products:

All AK-CLAD™ products are custom products. Please contact your Manson Insulation Area Manager. All custom product requests require approval, regardless of whether the product has previously been produced. Minimum order quantities will apply.

Custom Minimum Run: 1 carton

## AK-CLAD™ WALL THICKNESS (CTN-LF)

	IPS/CTS	1"	1 1/2"	2"	2 1/2"	3"	3 1/2"	4"
THICKNESS	3/4"	—	A-60	B-75	—	—	—	—
	1"	—	C-75	B-60	—	B-33	—	—
	1 1/8"	—	A-60	B-75	—	—	—	—
	1 1/4"	—	C-60	B-60	B-42	—	—	—
	1 3/8"	—	C-75	B-60	—	—	—	—
	1 1/2"	—	C-60	B-42	B-33	B-24	—	—
	1 5/8"	—	C-60	B-60	B-42	—	—	—
	2"	B-99	B-60	B-42	B-33	B-24	B-18	B-15
	2 1/8"	C-99	B-75	B-42	B-33	B-24	B-18	B-15
	2 1/2"	B-75	B-42	B-33	B-24	B-18	B-15	B-12
	2 5/8"	B-99	B-60	B-42	B-33	B-24	B-18	B-15
	3"	B-60	B-42	B-33	B-24	B-18	B-15	B-12
	3 1/8"	B-75	B-42	B-33	B-24	B-18	B-15	B-12
	3 1/2"	B-42	B-33	B-24	B-18	B-15	B-12	B-9
	3 5/8"	B-60	B-42	B-33	B-24	B-18	B-15	B-12
	4"	B-42	B-33	B-24	B-18	B-15	B-12	B-9
	4 1/8"	B-42	B-33	B-24	B-18	B-15	B-12	B-12
	4 1/2"	B-33	B-24	B-18	B-15	B-12	B-9	B-9
	5"	B-33	B-24	B-18	B-15	B-12	B-9	B-6
	5 1/8"	B-33	B-24	B-18	B-15	B-12	B-9	B-9
	6"	B-24	B-18	B-15	B-12	B-9	C-6	A-3
	6 1/8"	B-24	B-18	B-15	B-12	B-9	C-6	C-6
	7"	B-18	B-15	B-12	B-9	C-6	A-3	A-3
	8"	B-15	B-12	B-9	C-6	B-6	A-3	A-3
9"	B-12	B-9	C-6	A-3	A-3	A-3	A-3	
10"	B-9	A-6	C-6	A-3	A-3	A-3	B-3	
11"	A-6	C-6	C-6	A-3	A-3	B-3	B-3	
12"	A-6	C-6	C-6	A-3	B-3	B-3	B-3	
14"	A-6	C-6	B-6	B-3	B-3	B-3	B-3	
15"	C-6	B-6	B-6	B-3	B-3	B-3	B-3	
16"	C-6	B-6	B-6	B-3	B-3	B-3	D-3	
17"	B-6	B-6	B-3	B-3	B-3	B-3	D-3	
18"	B-6	B-6	B-3	B-3	B-3	B-3	D-3	
19"	B-6	B-3	B-3	B-3	B-3	B-3	D-3	
20"	B-6	B-3	B-3	B-3	D-3	D-3	D-3	
21"	B-6	D-6	D-6	D-6	D-3	D-3	—	
22"	D-6	D-6	D-6	D-6	D-3	—	—	
23"	D-6	D-6	D-6	D-3	—	—	—	
24"	D-6	D-6	D-6	D-3	D-3	—	—	

Factors:

A	.242
B	.412
C	.329
D	.606

53' TL



# AK BOARD™ INSULATION

**AK Board™** insulation is a thermal and acoustical insulation product made from inorganic glass fibers preformed into boards bonded by a thermosetting resin. It is available plain or with a factory applied facing (FSK or ASJ).

**AK Board™** insulation is a versatile product for thermal and acoustical applications such as: heating and air conditioning ducts, power and process equipment, boiler and stack installations, metal and masonry walls, wall and roof panel systems, curtain wall assemblies and cavity walls. This product does not contain polybrominated diphenyl ethers (PBDE) such as Penta-BDE, Octa-BDE or Deca-BDE.

## CUSTOM MINIMUMS FOR AK BOARD™

	1"	1 ½"	2"	2 ½"	3"	3 ½"	4"
1.6#	-	32 msf	18 msf	15 msf	12 msf	11 msf	10 msf
2.25#	34 msf	22 msf	17 msf	12 msf	10 msf	10 msf	9 msf
3.0#	24 msf	16 msf	12 msf	10 msf	9 msf	7 msf	6 msf
4.25#	18 msf	12 msf	9 msf	7 msf	-	-	-
6.0#	12 msf	9 msf	6 msf	-	-	-	-

# AK BOARD™ INSULATION

		Density	1"	1 1/2"	2"	2 1/2"	3"	3 1/2"	4"	
<b>UNFACED</b>	SLEEVE 24" X 48"	1.6#	Product Code		401075	425011				
			Square feet per sleeve		192	104				
			Sleeve per package		6	6				
			Minimum order		1 package	1 package				
			Truckload % per sleeve		0.36	0.30				
		2.25#	Product Code			401078				
			Square feet per sleeve			112				
			Sleeve per package			6				
			Minimum order			1 package				
			Truckload % per sleeve			0.36				
		3.00#	Product Code	401063	401064	401061				
			Square feet per sleeve	160	112	80				
	Sleeve per package		6	6	6					
	Minimum order		1 package	1 package	1 package					
	Truckload % per sleeve		0.33	0.33	0.33					
	CARTON 24" X 48"	3.00#	Product Code							
			Square feet per sleeve							
			Sleeve per package							
			Minimum order							
			Truckload % per sleeve							
6.00#		Product Code			400975					
		Square feet per carton			48					
		Carton per package			8					
		Minimum order			1 package					
		Truckload % per carton			0.26					
<b>FSK</b>	CARTON 24" X 48"	2.25#	Product Code	401118	401105	401086				
			Square feet per carton	96	64	48				
			Carton per package	8	8	8				
			Minimum order	1 package	1 package	1 package				
			Truckload % per carton	0.26	0.26	0.26				
		3.00#	Product Code	400976	400977	400978		401042		
			Square feet per carton	96	64	48		32		
			Carton per package	8	8	8		8		
			Minimum order	1 package	1 package	1 package		1 package		
			Truckload % per carton	0.26	0.26	0.26		0.26		
	6.00#	Product Code		400980	400981					
		Square feet per carton		64	48					
		Carton per package		8	8					
		Minimum order		1 package	1 package					
		Truckload % per carton		0.26	0.26					
	CARTON 48" X 96"	3.00#	Product Code			425159				
			Square feet per carton			128				
			Carton per package			4				
			Minimum order			1 package				
			Truckload % per carton			0.646				
<b>ASJ</b>	CARTON 24" X 48"	3.00#	Product Code	401046	401048	401049				
			Square feet per carton	96	64	48				
			Carton per package	8	8	8				
			Minimum order	1 package	1 package	1 package				
			Truckload % per carton	0.26	0.26	0.26				
	6.00#	Product Code		400989	401047					
		Square feet per carton		64	48					
		Carton per package		8	8					
		Minimum order		1 package	1 package					
		Truckload % per carton		0.26	0.26					





# AK FLEX™ PIPE & TANK INSULATION

AK FLEX™ pipe and tank insulation is a 48" wide semi-rigid mineral glass wool blanket, 2.5 pcf density, in roll form. It is available faced with a factory applied ASJ or FSK vapor retarder jacket. The fiber orientation provides excellent compressive strength while maintaining flexibility for ease of installation.

AK FLEX™ pipe and tank insulation is typically used on tanks, vessels and large-diameter (greater than 10") pipes. It can be used for any curved or irregular surfaces that require finished characteristics of rigid mineral glass wool insulation. This product does not contain polybrominated diphenyl ethers (PBDE) such as Penta-BDE, Octa-BDE or Deca-BDE.

AK FLEX™ PIPE AND TANK INSULATION								
	Thickness	Width	Length	Product code	Square feet per roll	Rolls per package	Minimum order	Truckload percentage
FSK	1"	48"	52'	401093	208	4	1 package	0.625
	1 1/2"	48"	30'	401098	120	4	1 package	0.481
	2"	48"	26'	401096	104	4	1 package	0.481
	3"	48"	18'	425205	72	4	1 package	0.625
ASJ	1 1/2"	48"	30'	401094	120	4	1 package	0.481
	2"	48"	26'	401097	104	4	1 package	0.481

- Standard Products: Listed in regular type. Minimum order per SKU is 1 unit.
- Non-Standard Products: Highlighted. Generally available from stock, but may require a lead time of up to 21 days. Minimum order per SKU is 1 unit.
- Custom Products: For items not listed in this load data guide, please contact your Manson Area Manager for pricing and availability, as minimum quantities apply. All custom products requests require approval, regardless of whether the product has previously been produced. Special pricing and minimum order quantities will apply.

CUSTOM MINIMUMS FOR AK FLEX™ PRODUCTS				
1"	1 1/2"	2"	2 1/2"	3"
24 msf	16 msf	12 msf	11 msf	10 msf

# HIGH TEMPERATURE PRODUCTS

**HIGH TEMPERATURE** products are lightweight and flexible thermal insulation made from inorganic glass fibres bonded with a high-temperature, thermosetting resin. The High Temperature products have excellent thermal properties and insulating effectiveness at minimum cost.

All the HT products are treated with an EPA registered, anti-microbial agent that prevents growth of mold, fungus or bacteria in accordance with ASTM C 1338.

HIGH TEMPERATURE BLANKET 1000° INSULATION									
	Density	Thickness	Width	Length	Product code	Square feet per roll	Rolls per package	Minimum order	Truckload percentage
UNFACED ROLL	1.1#	1"	48"	75'	431042	600	4	1 package	0.420
		2"	48"	75'	431045	300	4	1 package	0.420
		3"	48"	50'	431046	200	4	1 package	0.420

2 rolls per sleeve and 2 sleeves per unit

HIGH TEMPERATURE BATT 1000° INSULATION									
	Density	Thickness	Width	Length	Product code	Square feet per carton	Carton per package	Minimum order	Truckload percentage
UNFACED PACKAGE	1.6#	2"	24"	48"	-	112	6	1 package	0.380

HIGH TEMPERATURE HD BLANKET 1000° INSULATION									
	Density	Thickness	Width	Length					
All High Temperature HD Blanket products are custom.									

HIGH TEMPERATURE PANEL 1000° INSULATION									
	Density	Thickness	Width	Length	Product code	Square feet per carton	Carton per package	Minimum order	Truckload percentage
	2.4#	2"	24"	48"	431055	120	6	1 package	0.380

HIGH TEMPERATURE BOARD 850° INSULATION									
	Density	Thickness	Width	Length	Product code	Square feet per carton	Carton per package	Minimum order	Truckload percentage
UNFACED CARTON	2.8#	1"	48"	96"	431049	288	4	1 package	0.641
		2"	24"	48"	431052	80	4	1 package	0.410

CUSTOM MINIMUMS FOR HIGH TEMPERATURE PRODUCTS								
	1"	1.5"	2"	2.5"	3"	3.5"	4"	
HT Blanket	54 msf	36 msf	27 msf	21 msf	18 msf	14 msf	12 msf	
HT Batt	-	24 msf	16 msf	14 msf	12 msf	11 msf	10 msf	
HT HD Blanket	-	24 msf	16 msf	14 msf	12 msf	11 msf	10 msf	
HT Panel	24 msf	16 msf	12 msf	11 msf	10 msf	8 msf	6 msf	
HT Board	24 msf	16 msf	12 msf	11 msf	10 msf	8 msf	6 msf	

Standard Products:

Listed in regular type. Minimum order per SKU is 1 carton.

Non-Standard Products:

Highlighted. Generally available from stock, but may require a lead time of up to 40 days.

Custom Products:

All custom products requests require approval, regardless of whether the product has previously been produced. Special pricing and minimum order quantities will apply. Please contact your Manson Insulation Area Manager



# ALLEY WRAP B™ INSULATION

**ALLEY WRAP B™** insulation is a thermal and acoustical insulation product made from highly resilient, inorganic glass fibers bonded by a thermosetting resin. It is available unfaced or with a multi-purpose foil-scrim kraft (FSK) or white poly-scrim kraft (PSK) jacket. Vapor retarders have a 2" (51 mm) stapling flange on one edge and the factory applied facing assures uniform quality.

**ALLEY-WRAP B™** insulation is used as an external insulation on commercial or residential heating or air conditioning ducts. It is suitable for the exterior of rectangular or round sheet metal ducts and spaces, or surfaces where temperature and condensation must be controlled. This product does not contain polybrominated diphenyl ethers (PBDE) such as Penta-BDE, Octa-BDE or Deca-BDE.

ALLEY WRAP B™ INSULATION									
	Density	Thickness	Width	Length	Product Code	Square feet per roll	Rolls per package	Minimum order	Truckload % per roll
UNFACED	0.75 PCF	1"	48"	100'	525404	400	4	1 package	0.174
		1 1/2"	48"	100'	525405	400	4	1 package	0.208
FSK	0.75 PCF	1 1/2"	48"	100'	515655	400	4	1 package	0.208
		2"	48"	75'	515654	300	4	1 package	0.208
		2 3/16"	48"	75'	515605	300	4	1 package	0.202
		2 1/2"	48"	75'	525383	300	4	1 package	0.208
		3"	48"	50'	515768	200	4	1 package	0.202
	1.0 PCF	1 1/2"	48"	100'	515766	400	3	1 package	0.202
		2"	48"	75'	515767	300	3	1 package	0.202
	1.5 PCF	1 1/2"	48"	75'	515763	300	3	1 package	0.202
2"		48"	50'	515653	200	3	1 package	0.202	
White PSK	.75 PCF	1 1/2"	48"	100'	525385	400	4	1 package	0.208
		2"	48"	75'	525397	300	4	1 package	0.208
	1 PCF	2"	48"	75'	525411	300	4	1 package	0.333

Standard Products: Listed in regular type. Minimum order per SKU is 1 carton.

Non-Standard Products: Highlighted. Generally available from stock, but may require a lead time of up to 21 days and the following minimum order per SKU is 1 unit.

Custom Products: For items not listed in this load data guide, please contact your Manson Territory Manager for pricing and availability, as minimum quantities apply. All custom products requests require approval, regardless of whether the product has previously been produced. Special pricing and minimum order quantities will apply. Customers are responsible for taking over-runs of up to 10%.

Custom Minimum Run: 0.75# 300 rolls, 1.0# 250 rolls, 1.5# 250 rolls.



# AKOUSTI-LINER™

**AKOUSTI-LINER™** insulation is a flexible duct liner providing both thermal and acoustical insulation. It is manufactured from inorganic glass fibers bonded with a thermosetting binder. The airstream surface is faced with a black mat bonded to the black glass wool substrate.

**AKOUSTI-LINER™** insulation is a durable, flexible liner used extensively in flat and irregular shaped ductwork and is offered with or without edge coating to seal fibers.

CUSTOM MINIMUMS FOR AKOUSTI-LINER™				
Density	½"	1"	1 ½"	2"
1.5#	–	20 msf	16 msf	16 msf
2.0#	22 msf	18 msf	16 msf	–

- Standard Products: Listed in regular type. Minimum order per SKU is 1 unit.
- Non-Standard Products: Highlighted. Generally available from stock, but may require a lead time of up to 21 days. Minimum order per SKU is 1 unit.
- Custom Products: For items not listed in this load data guide, please contact your Manson Area Manager for pricing and availability, as minimum quantities apply. All custom products requests require approval, regardless of whether the product has previously been produced. Special pricing and minimum order quantities will apply.
- Custom Minimum Run: 0.75# 300 rolls, 1.0# 250 rolls, 1.5# 250 rolls.

## AKOUSTI-LINER™ INSULATION

	Density	Thickness	R-Value	Width	Length	Product Code	Square feet per roll	Rolls per package	Minimum order	Truckload % per roll	
ROLL	1.5#	1"	4.2	35-1/2"	100'	401109	295.833	4	1 package	0.319	
				44"	100'	401027	366.667	4	1 package	0.433	
				47"	50'	401008	195.833	4	1 package	0.238	
				47"	100'	401009	391.667	4	1 package	0.433	
				47-1/2"	100'	401010	395.833	4	1 package	0.433	
				48"	100'	401011	400.000	4	1 package	0.433	
				56"	100'	401012	466.667	4	1 package	0.535	
				56-1/4"	100'	401013	468.750	4	1 package	0.535	
				59"	100'	401015	491.667	4	1 package	0.535	
				59-1/2"	100'	401016	495.833	4	1 package	0.535	
		60"	100'	401017	500.000	4	1 package	0.535			
		47"	50'	401019	195.833	4	1 package	0.407			
		47-1/2"	50'	401137	197.917	4	1 package	0.407			
		48"	50'	401020	200.000	4	1 package	0.407			
		56-1/4"	50'	401126	234.375	4	1 package	0.495			
		56-1/4"	90'	424881	421.875	4	1 package	0.952			
		56-1/2"	50'	401143	235.417	4	1 package	0.495			
		59"	50'	401031	245.833	4	1 package	0.495			
		59-1/2"	50'	401104	247.917	4	1 package	0.495			
		60"	50'	401032	250.000	4	1 package	0.495			
		47"	50'	401021	195.833	4	1 package	0.433			
		47-1/2"	50'	401127	197.917	4	1 package	0.433			
		48"	50'	401022	200.000	4	1 package	0.433			
		56-1/4"	50'	401034	234.375	4	1 package	0.535			
		59"	50'	401036	245.833	4	1 package	0.535			
		59-1/2"	50'	401037	247.917	4	1 package	0.535			
		60"	50'	401038	250.000	4	1 package	0.535			
		2.0#	1/2"	2.1	47"	100'	401023	391.667	4	1 package	0.407
		47-1/2"			100'	401024	395.833	4	1 package	0.407	
		48"			100'	401025	400.000	4	1 package	0.407	
	59"	100'			401026	491.667	4	1 package	0.495		



# AKOUSTI-LINER R™

**AKOUSTI-LINER R™** insulation is a heavy-density mineral glass wool board insulation product made from inorganic glass fibers bonded by a thermosetting binder. Its base board is brown with a black mat facing on the airstream surface.

**AKOUSTI-LINER R™** insulation is a premium, extra durable rigid liner for use on flat duct surfaces. Some typical applications include fan plenums and air distribution ducting on industrial and commercial heating, ventilating and air-conditioning systems.

AKOUSTI-LINER R™ INSULATION									
	Density	Thickness	Width	Length	Product Code	Square feet per carton	Cartons per package	Minimum order	Truckload % per carton
CARTON	3.0#	1"	24"	48"	401119	96	8	1 package	0.240
		2"	24"	48"	401121	48	8	1 package	0.240
		1"	48"	96"	401132	256	1	1 package	0.649

CUSTOM MINIMUMS FOR AKOUSTI-LINER R™			
Density	1"	1.5"	2"
3.0#	24 msf	16 msf	12 msf

Standard Products: Listed in regular type. Minimum order per SKU is 1 unit.

Non-Standard Products: Highlighted. Generally available from stock, but may require a lead time of up to 21 days. Minimum order per SKU is 1 unit.

Custom Products: Highlighted with astrisk. All custom products requests require approval, regardless of whether the product has previously been produced. Special pricing and minimum order quantities will apply. Please contact your Manson Insulation Territory Manager.

# ALLEY KAT AIR DUCT BOARD™

**ALLEY KAT AIR DUCT BOARD™** is a rigid glass wool board faced on one side with a foil-scrim-kraft (FSK) vapor retarder and with a lightweight black glass wool mat on the airstream surface. It is used to fabricate rectangular or Max10 air duct systems. The product is offered in two stiffness ratings, EI-475 and EI-800. Both types are available with butt edge or factory molded male-female shiplap edges.

**ALLEY KAT AIR DUCT BOARD™** airstream surface is treated with an EPA registered, anti-microbial agent that prevents growth of mold, fungus or bacteria in accordance with ASTM G 21, UL 181. Manson Alley Kat Air Duct Board™ is designed for commercial and residential air handling installations for cooling, heating or dual-temperature service where good temperature control and noise absorption are required.

ALLEY KAT AIR DUCT BOARD™												
	Thickness	Edge Type	R-Value	Width	Length	Pieces	Sq. Ft. / carton	53' TL LF	Cartons/ 53' TL	Product Code		
CARTON	EI-475	1"	BE	4.3	48"	120"	6	240	0.649	154	400988	
			SL	4.3		120"	6	240	0.649	154	400990	
			SL	4.3		96"	8	256	0.649	154	400993	
	EI-800	1 1/2"	SL	6.5		120"	4	160	0.649	154	400991	
			SL	8.7		120"	3	120	0.649	154	400995	
			SL	8.7		120"	3	120	0.649	154	400995	
	Thickness	Edge Type	R-Value	Width	Length	Pieces/ Pallet	Sq. Ft. / Pallet	53' TL LF	Pallets/ 53' TL	Product Code		
CARTONS ON PALLETS	EI-475	1"	SL	4.3	48"	120"	90	3600	10	10	400996	
			SL	6.5		120"	60	2400	10	10	400997	
			SL	8.7		120"	45	1800	10	10	401056	
SHEETS ON PALLETS - ENCLOSED TRAILER	EI-475	1"	SL	4.3		48"	120"	48	1920	5	20	400999
			BE	4.3			120"	48	1920	5	20	401002
			SL	6.5			120"	32	1280	5	20	401000
	EI-800	1 1/2"	BE	6.5	120"		32	1280	5	20	401003	
			SL	8.7	120"		24	960	5	20	401001	
			BE	8.7	120"		24	960	5	20	401050	

Edge type: BE = Butt Edge; SL = Shiplap Edge

Standard Products: Listed in regular type. Minimum order per SKU is 1 carton.

Non-Standard Products: Highlighted. Generally available from stock, but may require a lead time of up to 60 days.

Custom Products: For items not listed in this load data guide, please contact your Manson Area Manager for pricing and availability, as minimum quantities apply. All custom products requests require approval, regardless of whether the product has previously been produced. Special pricing and minimum order quantities will apply.

Custom Minimum Run: 30 msf -1", 25 msf- 1½" & 2"



# AK BLANKET™

**AK BLANKET™** is an amber blanket of glass fibers bonded with a thermosetting resin.

**AK BLANKET™** products are used as thermal and/or acoustical insulation in the appliance, equipment, industrial, commercial and marine markets.

AK BLANKET™									
	Density	Thickness	Width Inches	Length Feet	Product code	Square feet per unit	Units per package	Minimum order	Truckload % per unit
ROLL	1.5#	1"	48"	125'	401082	500	4	1 unit	0.513
		2"	48"	60'	401088	240	4	1 unit	0.446

Standard Products: Listed in regular type. Minimum order per SKU is 1 carton.

Non-Standard Products: Highlighted. Generally available from stock, but may require a lead time of up to 30 days.

Custom Products: For items not listed in this load data guide, please contact your Manson Area Manager for pricing and availability, as minimum quantities apply. All custom products requests require approval, regardless of whether the product has previously been produced. Special pricing and minimum order quantities will apply.



---

# MANSON

## INSULATION

---

KEEPING IT SIMPLE.™

Head Office

One Knauf Drive  
Shelbyville, IN 46176

(800) 825-4434, ext. 8300

[www.knaufinsulation.us](http://www.knaufinsulation.us)



MADE IN THE USA  
1/2016